



Early Effect & BJT Biasing

- Early Effect
- DC BJT Behavior
- DC Biasing the BJT

Early Effect

Collector voltage has some effect on collector current – it increases slightly with increases in voltage. This phenomenon is called the “Early Effect” and is modeled as a linear increase in total current with increases in v_{CE} :

$$i_C = I_S e^{\frac{v_{BE}}{V_T}} \left(1 + \frac{v_{CE}}{V_A} \right)$$

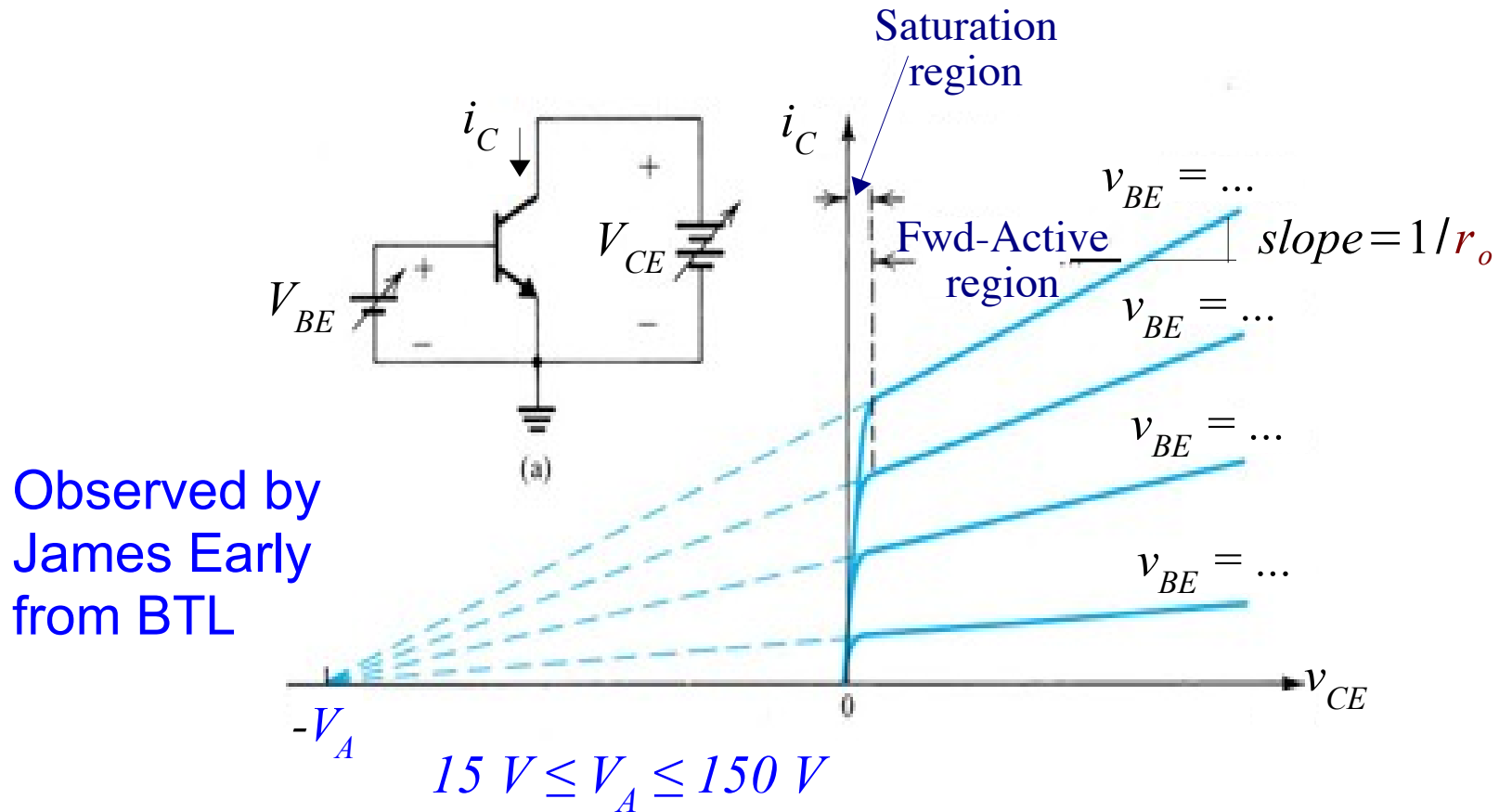
NMOS transistor

$$i_D = i_{DS} \approx \frac{1}{2} k_n' \frac{W}{L} (v_{GS} - V_t)^2 (1 + \lambda_n v_{DS})$$

$$\lambda_n = \frac{1}{V_A}$$

V_A is called the Early voltage and ranges from about $50 V$ to $100 V$.

Early Effect



Early Effect - Continued

Total (bias+signal) quantities:
$$i_C = I_S e^{\frac{v_{BE}}{V_T}} \left(1 + \frac{v_{CE}}{V_A} \right)$$

$$i_C = I_C + i_c \quad v_{BE} = V_{BE} + v_{be} \quad v_{CE} = V_{CE} + v_{ce}$$

Consider dc (bias) condition (signal = 0):

$$i_C = I_C \quad v_{BE} = V_{BE} \quad v_{CE} = V_{CE}$$

$$i_C = I_C = I_S e^{\frac{V_{BE}}{V_T}} \left(1 + \frac{V_{CE}}{V_A} \right) = I'_C \left(1 + \frac{V_{CE}}{V_A} \right)$$

Call the idealized collector bias current I'_C :

$$I'_C = I_S e^{\frac{V_{BE}}{V_T}}$$

Early Effect - Continued

Rearranging slightly:

$$I_C = I'_C \left(1 + \frac{V_{CE}}{V_A} \right) = I'_C + \frac{V_{CE}}{\frac{V_A}{I'_C}}$$

We shall define: $r_o = \frac{V_A}{I'_C}$

$$I'_C = I_S e^{\frac{V_{BE}}{V_T}} \Rightarrow r_o = f(V_{BE})$$

MOS transistor

$$r_o = \frac{V_A}{I_D} \quad I_D = \frac{1}{2} k'_n \frac{W}{L} (V_{GS} - V_t)^2$$

The dc current due to both emitter and collector voltages is:

$$I_C = I'_C + \frac{V_{CE}}{r_o}$$

Early Effect - Continued

Although the bias current including the Early effect is better modeled as:

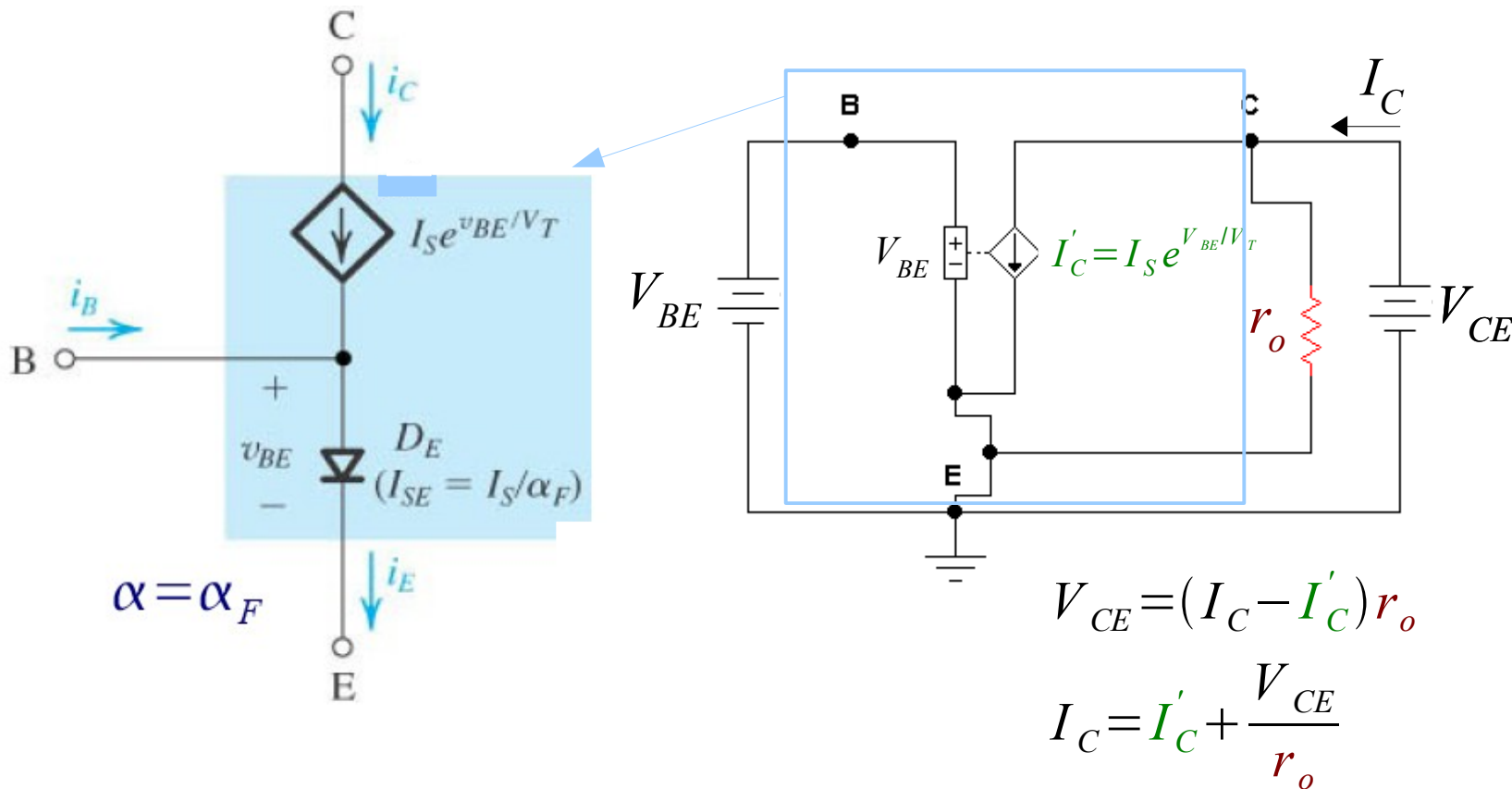
$$I_C = I'_C + \frac{V_{CE}}{r_o}$$

We – almost always – will ignore the second term above in hand calculations and use our usual expression for the bias current:

$$I_C \approx I'_C = I_S e^{\frac{V_{BE}}{V_T}}$$

Early Effect - Continued

The Early term adds r_o to the large signal model:



Early Effect - Continued

For typical operating conditions:

$$V_A \approx 50 - 100 V.$$

$$I_C' \approx 1 mA.$$

$$r_o = \frac{V_A}{I_C'} \approx \frac{100}{10^{-3}} = 100 k \Omega$$

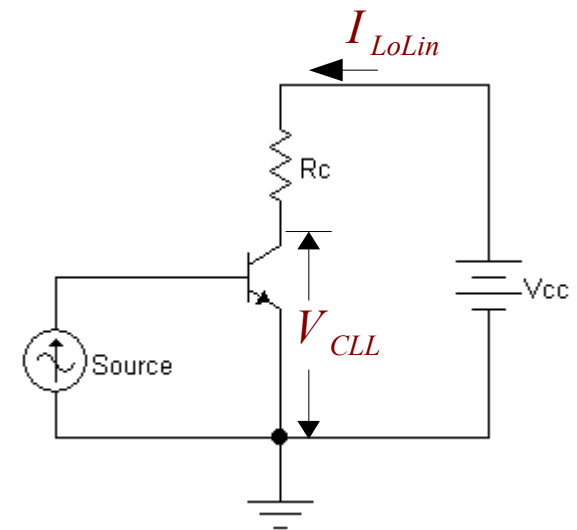
We usually can **ignore** r_o since, in practice, r_o is in parallel with other resistors, which are much smaller than $100 k \Omega$. For the time being, you will be told if you must include r_o in your pencil-and-paper circuit designs.

Early Effect Scilab Simulation

```

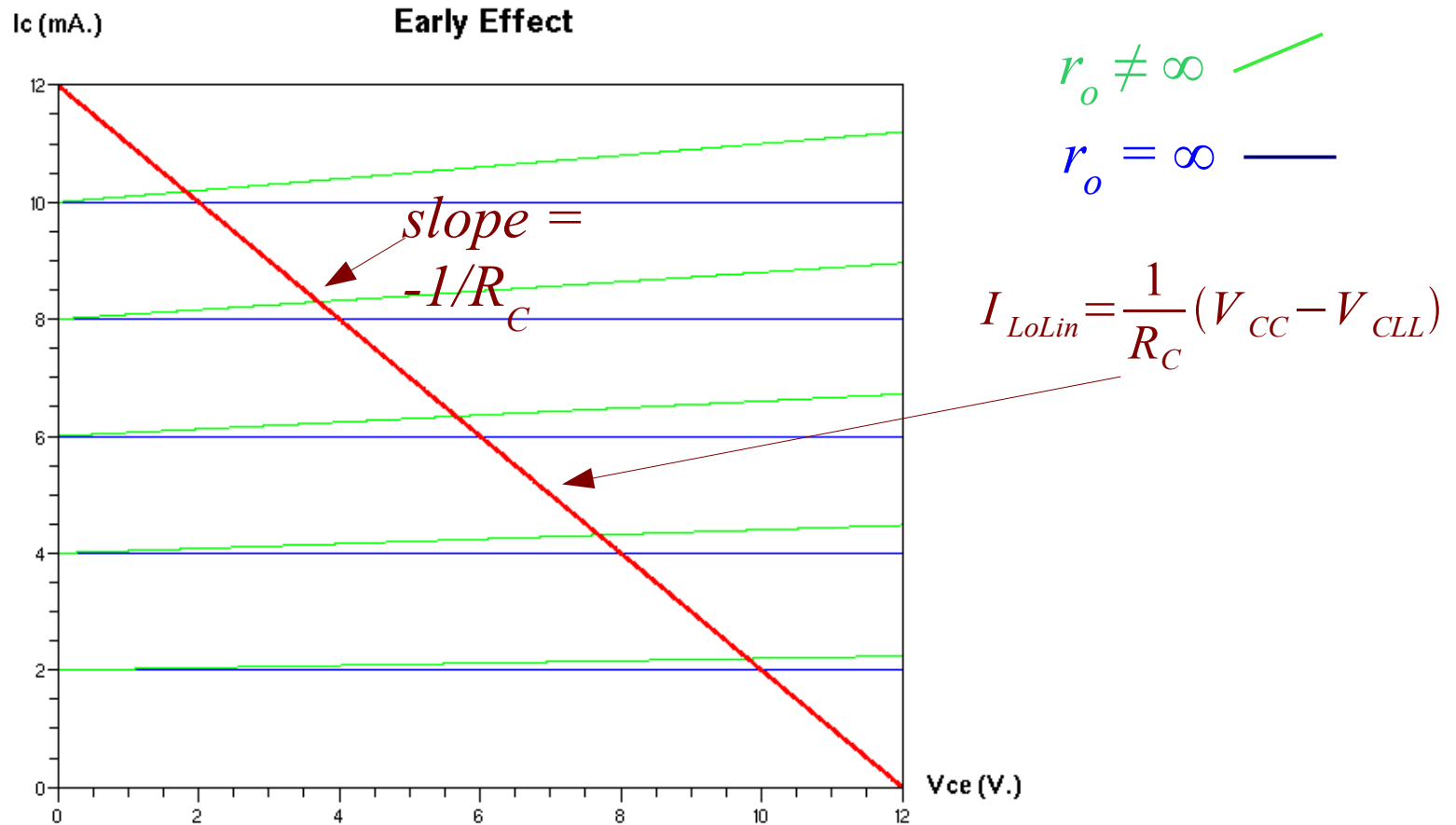
VsubA=100;
vCE=0.01:0.01:12; //array 0.01 to 12 in .01 V. steps
for ICprime = 2:2:10 //mA.
    ICp = ICprime*sign(vCE); //ICp value for each vCE one
    plot(vCE,ICp); //Current in mA.
    ro=VsubA/ICprime;//Add bias Early effect
    IC=ICp+vCE/ro;
    plot(vCE,IC)
end
//Plot load line for 1 KOhm Rc - 12V Vcc
Rc=1000;
Gc=1/Rc;
Vcc=12;
vCLL = 0:0.01:12;
ILOLin=Gc*Vcc-Gc*vCLL;
plot(vCLL,ILOLin)

```



$$I_{LoLin} = \frac{1}{R_C} (V_{CC} - V_{CLL})$$

Simulation Results



Forward-Active Mode Conditions

Base-emitter diode forward-biased:

$$v_{BE} \geq 0.7 V$$

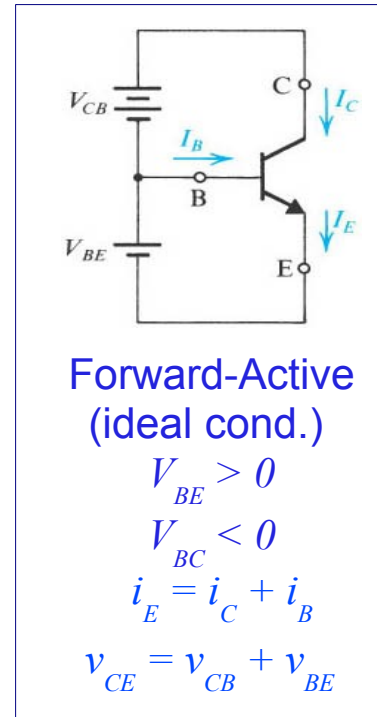
Base-collector diode reverse-biased:

$$v_{BC} = v_{BE} - v_{CE} \leq 0.5 V$$

Solving for v_{CE} :

$$v_{CE} \geq v_{BE} - 0.5 \Rightarrow v_{CE} \geq 0.2 V$$

$v_{CE} \geq 0.2 V$ required to maintain forward-active mode



Amplifier Biasing Goals

We wish to set a stable value of I_C so that we can apply a voltage signal or current signal to the emitter-base circuit and obtain an amplified (undistorted) version of the signal between the collector and ground.

The transistor cannot saturate during operation, i.e.

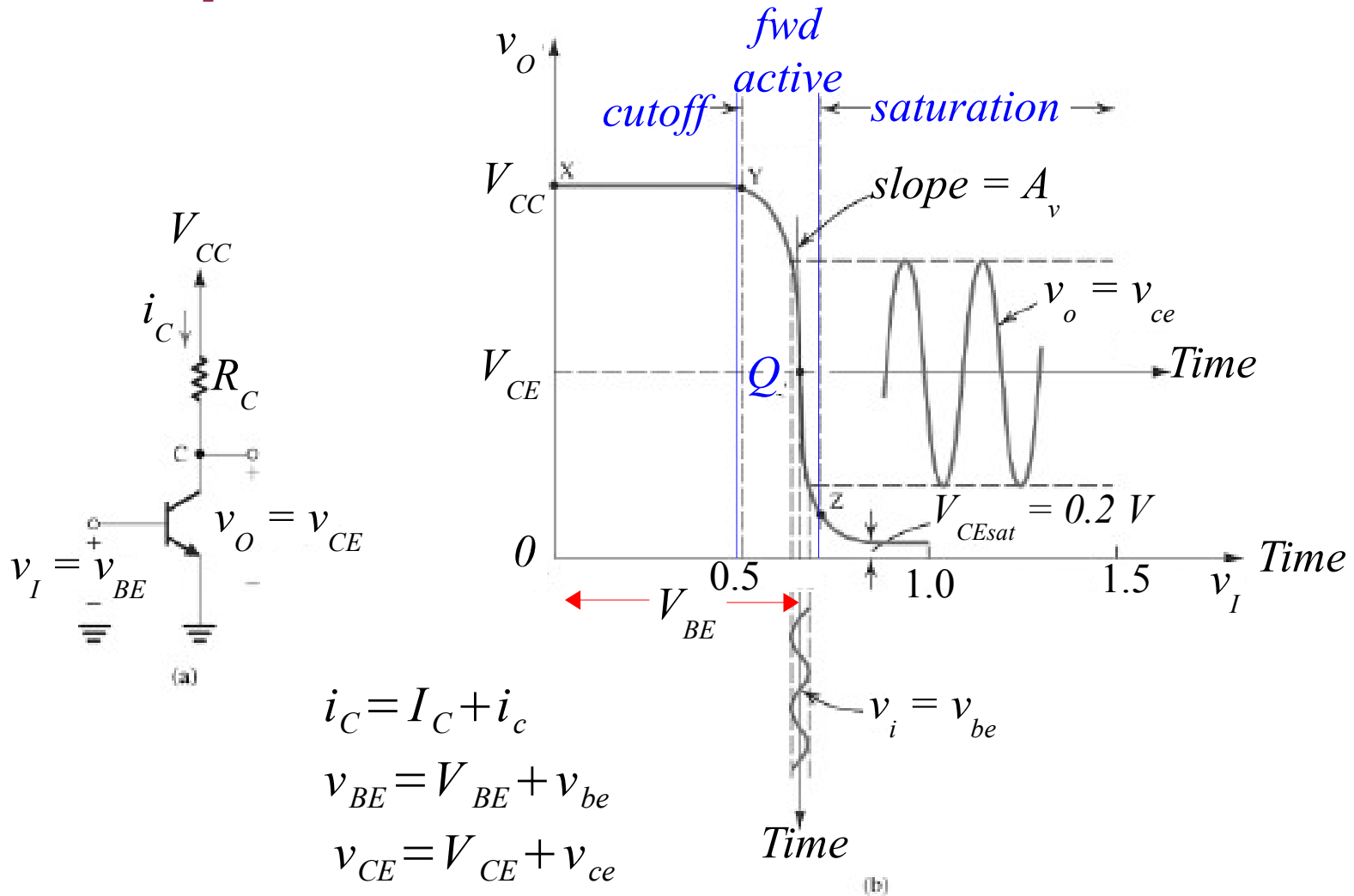
$$v_{CE} > 0.2 V.$$

And it cannot cut off during operation, i.e.

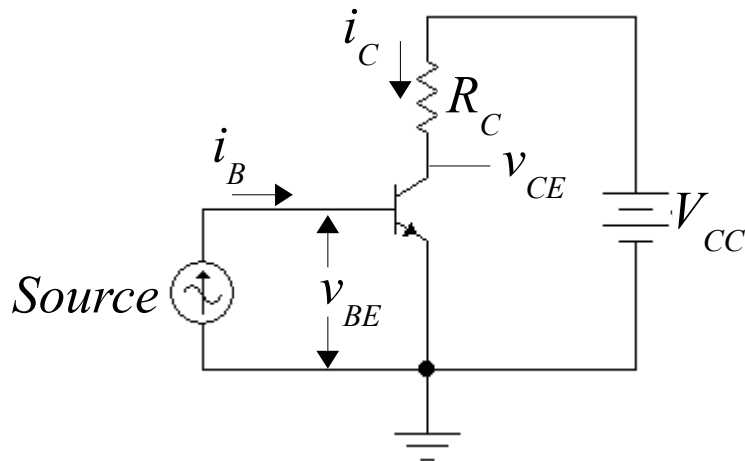
$$i_C > 0 mA.$$



Amplifier DC Bias Problem

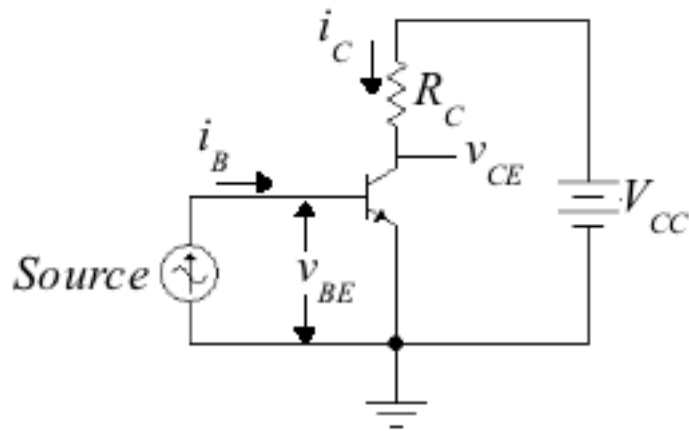


Amplifier Action



- **Base current source:**
 - A small change in base current results in a large collector current (βi_b).
 - This yields a large change in collector voltage.
- **Base voltage source:**
 - A small change in base voltage results in a large change in collector current ($i_c = I_S \exp(v_{be}/V_T)$).
 - This yields a large change in collector v_{ce} voltage.

Voltage Source Input With Collector Load



Solution of the simultaneous equations exists where the two curves: the exponential (i_C, v_{BE}) and the straight line (i_C, v_{CE}) intersect:

$$i_C = I_S e^{\frac{v_{BE}}{V_T}} \quad \text{BJT}$$

$$i_C = \frac{V_{CC} - v_{CE}}{R_C} \quad \text{Circuit}$$

$$\frac{V_{CC} - v_{CE}}{R_C} = I_S e^{\frac{v_{BE}}{V_T}}$$

Load Line

Scilab Plot of NPN Characteristic

```
//Calculate and plot npn BJT collector  
//characteristic using active mode model
```

```
VsubT=0.025;
```

```
VTinv=1/VsubT;
```

```
IsubS=1E-14;
```

```
vCE=0:0.01:10;
```

```
for vBE=0.58:0.01:0.63
```

```
  iC=IsubS*exp(VTinv*vBE);
```

```
  plot(vCE,1000*iC); //Current in mA.
```

```
end
```

```
Vcc=10;
```

```
Rc=10000;
```

```
vLoad=0:0.01:10;
```

```
iLoad=(Vcc-vLoad)/Rc;
```

```
plot(vLoad,1000*iLoad);
```

$$i_C = I_S e^{\frac{v_{BE}}{V_T}}$$

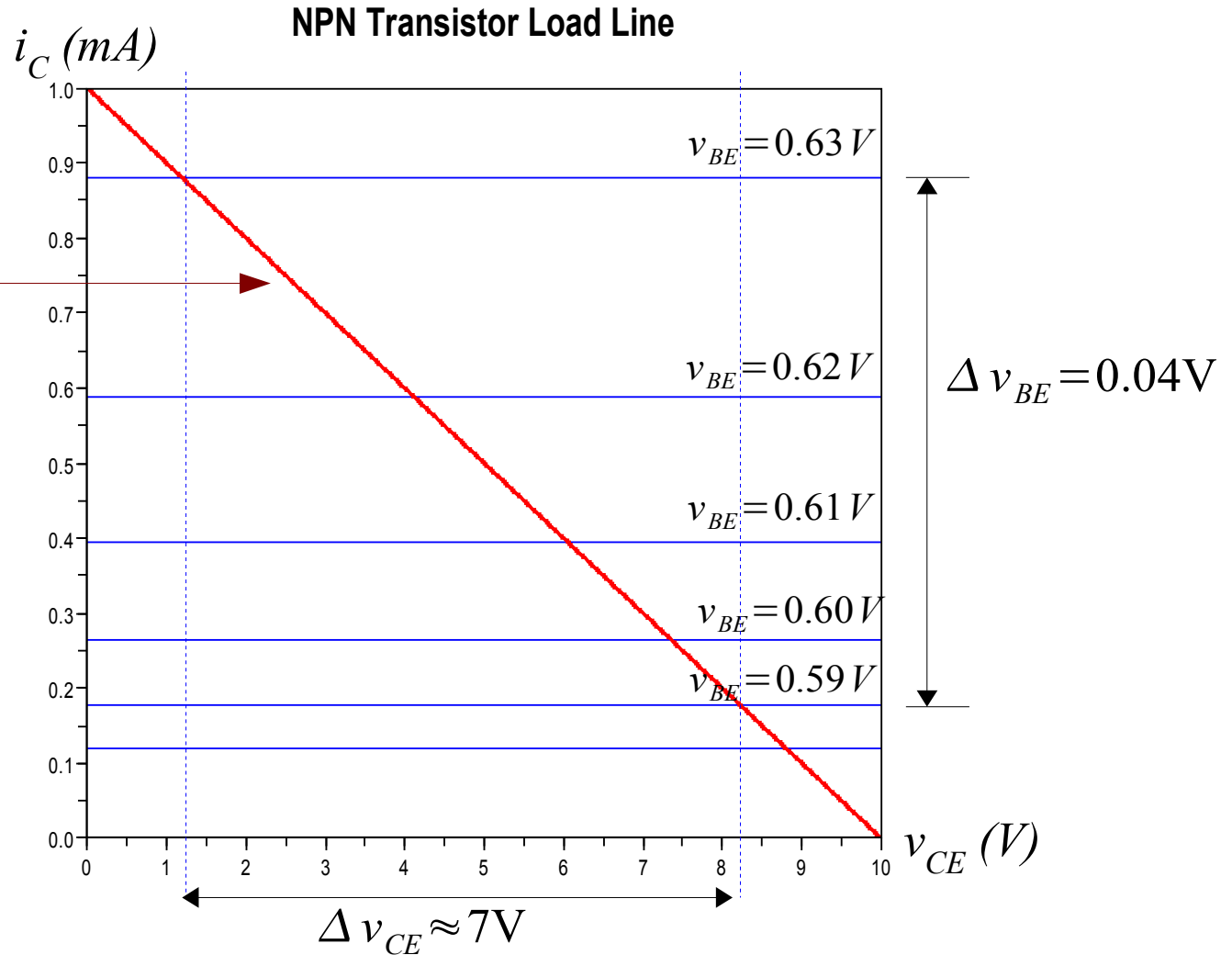
$$i_C = \frac{V_{CC} - v_{CE}}{R_C}$$

Plot Output

Load Line

$$i_C = \frac{V_{CC} - v_{CE}}{R_C}$$

$V_{CC} = 10V$
 $R_C = 10k\ \Omega$



Amplifier Action

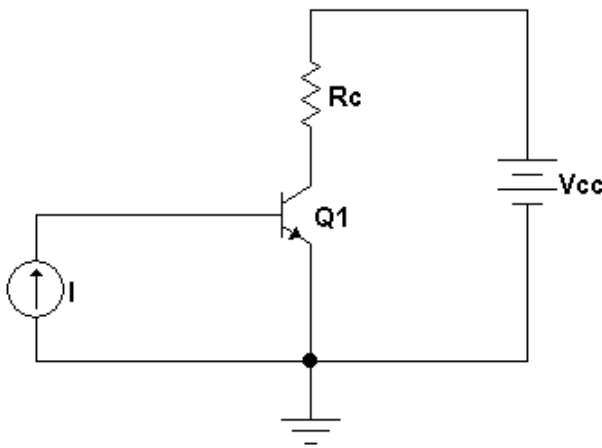
- Note that a 0.04 V peak-to-peak swing in v_{BE} results in an 7 V peak-to-peak swing in $v_{CE} \Rightarrow$ A voltage gain ratio of $7/0.04 = 175$.
- The output magnitude is about 175 times the input magnitude, for a gain of 175 .

The input signal has two components: a DC one called the *bias voltage*, and an AC one called the (*small*) *signal voltage*. For proper operation, let:

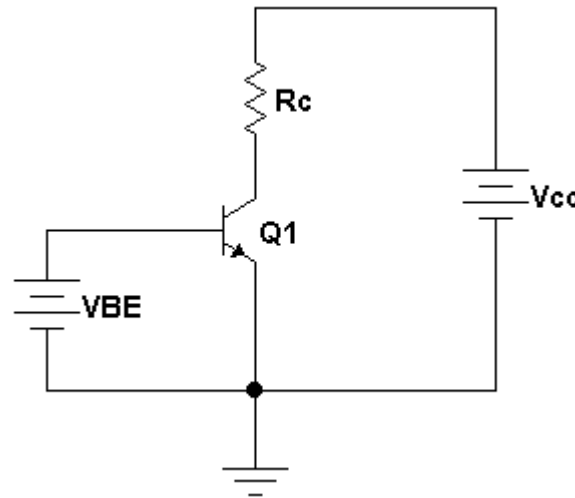
$$V_{BIAS} = (V_{BE(MAX)} + V_{BE(MIN)})/2 = (0.63\text{ V} + 0.59\text{ V})/2 = 0.61\text{ V}$$

$$v_{SIGNAL} = (V_{BE(MAX)} - V_{BE(MIN)})/2 = (0.63\text{ V} - 0.59\text{ V})/2 = 0.02\text{ V}$$

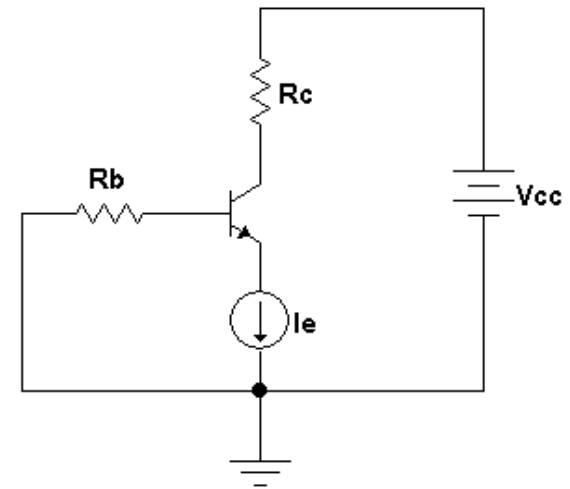
Candidate Bias Configurations



Base current
source

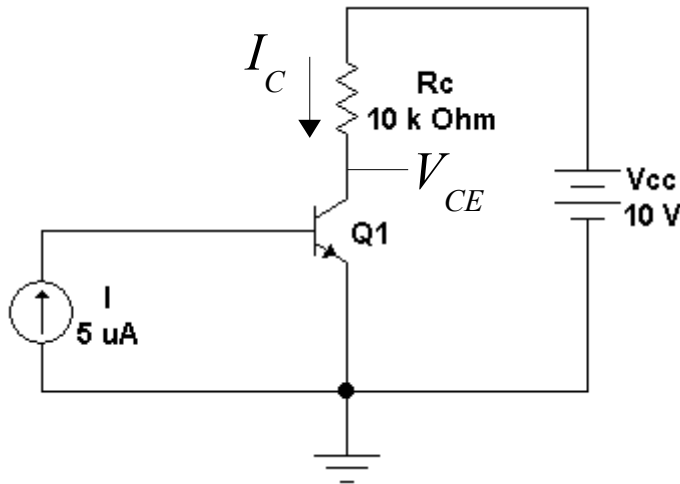


Base voltage
source



Emitter current
source

Drive Base With a DC Current Source



Assume: $\beta = 100$

$$I_C = \beta I_B = 100 \cdot 5 \cdot 10^{-6}$$

$$I_C = 0.5 \text{ mA.}$$

For this collector current:

$$V_{CE} = V_{CC} - R_C I_C$$

$$V_{CE} = 10 - 10^4 \cdot 0.5 \cdot 10^{-3} = 5 \text{ V}$$

The transistor is almost right in the center of the desired operating region!

Current Bias Beta Dependence

Unfortunately, β is very poorly controlled!

1. β may easily vary between *50* & *200* among units of a particular BJT model.
2. β is also temperature dependent.

For $\beta = 50$:

$$I_C = 50 \cdot 5 \cdot 10^{-6} = 0.25 \text{ mA}$$

For $\beta = 200$:

$$I_C = 200 \cdot 5 \cdot 10^{-6} = 1.0 \text{ mA}$$

$$V_{CE} = V_{CC} - R_C I_C$$

$$V_{CE} = 10 - 10^4 \cdot 0.25 \cdot 10^{-3} = 7.5 \text{ V}$$

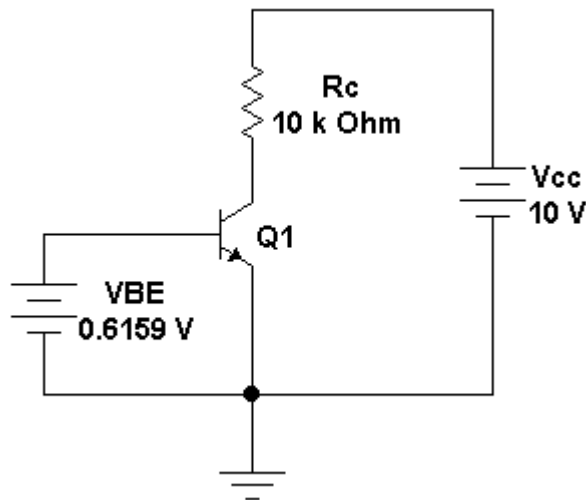
The device with a $V_{CE} = 7.5 \text{ V}$ is close to the I_C cutoff point.

$$V_{CE} = 10 - 10^4 \cdot 1 \cdot 10^{-3} = 0 \text{ V}$$

The device is saturated, V_{CE} tries to be 0 V !

There are huge problems associated with trying to drive a BJT with a base current source! BIAS POINT IS UNSTABLE.

Drive base with a voltage source



$$I_C = I_S e^{\frac{V_{BE}}{V_T}}$$

$$V_{BE} = V_T \ln\left(\frac{I_C}{I_S}\right)$$

Given: $I_S = 10^{-14} \text{ A}$

and: $I_C = 0.5 \cdot 10^{-3} \text{ A}$

$$V_{BE} = 0.025 \ln(0.5 \cdot 10^{11})$$

$$V_{BE} = 0.025 \cdot 24.635 = 0.6159 \text{ V}$$

Again, the transistor is nearly at the center of the desired operating region!

OK. Apply *0.6159* volts to the base and we have the desired collector current!

Voltage Bias I_S and V_{CE} Dependence

Unfortunately, I_S is highly temperature-dependent!

1. I_S doubles for a 5°C increase in temperature.
2. If V_{BE} is selected to give $I_C = 0.5\text{ mA}$ at 20°C (68°F), it will double at 25°C and halve at 15°C .

I_C is also highly sensitive to V_{BE} . Consider two values of collector current, I_C and $10I_C$:

$$\frac{10I_C}{I_C} = \frac{I_S e^{\frac{V_{BE10}}{V_T}}}{I_S e^{\frac{V_{BE1}}{V_T}}} \Rightarrow 10 = \frac{e^{\frac{V_{BE10}}{V_T}}}{e^{\frac{V_{BE1}}{V_T}}} \Rightarrow V_{BE10} - V_{BE1} = V_T \ln(10)$$

$$V_{BE10} - V_{BE1} = 0.025 \cdot 2.3025 = 0.0576\text{ V}$$

Less than a 60 mV change in V_{BE} voltage increases I_C by an order of magnitude ($10X$). BIAS POINT IS UNSTABLE.

Emitter Current Source Biasing

I_E biasing holds I_C close to its desired value since:

$$I_C = \alpha I_E$$

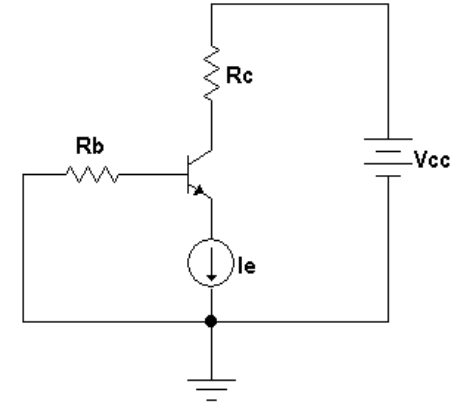
Changes in I_C for α in the range determined by the extremes of β are negligible, i.e.

$$50 < \beta < 200 \Rightarrow \frac{50}{51} = 0.980 < \alpha < \frac{200}{201} = 0.995$$

There is considerable variation in base current, however, but this is usually of no consequence because I_E is set.

$$I_B = \frac{I_E}{\beta + 1} \Rightarrow \frac{I_E}{51} < I_B < \frac{I_E}{201}$$

BIAS POINT IS STABLE



Conclusion

Biassing a BJT poses potential large operating point stability problems, since

1. BJT characteristics are highly sensitive to temperature
2. BJT electrical properties (principally β) vary widely from one unit to another!

The next lecture will address techniques for stabilizing BJT operation.