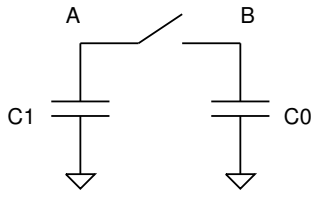
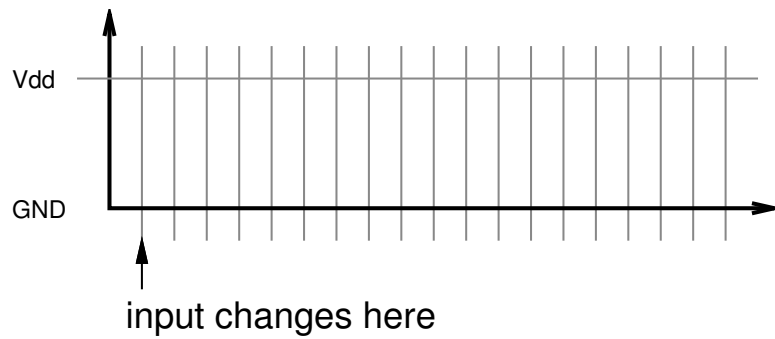
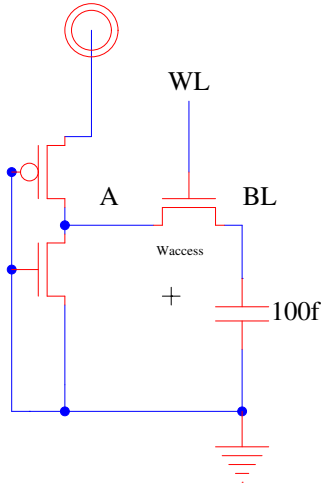


- Initially: The switch is open and node A is charge to 1V and node B is charged to 0V. What is the voltage at node A in steady state after the switch is closed?

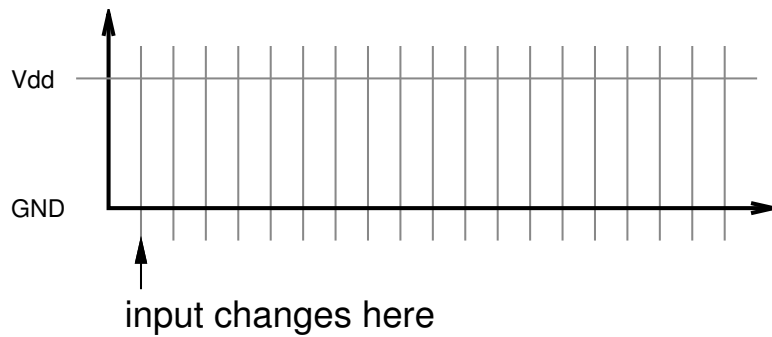
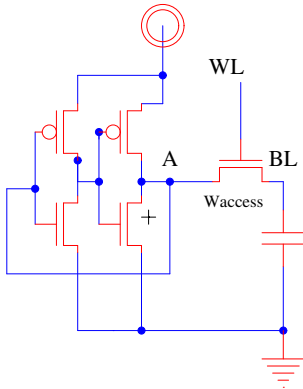


- What is the waveform on A after WL transitions from 0 to 1?



Assume BL initially at 0. How does it depend on  $W_{access}$ ?

- What is the waveform on A after WL transitions from 0 to 1?

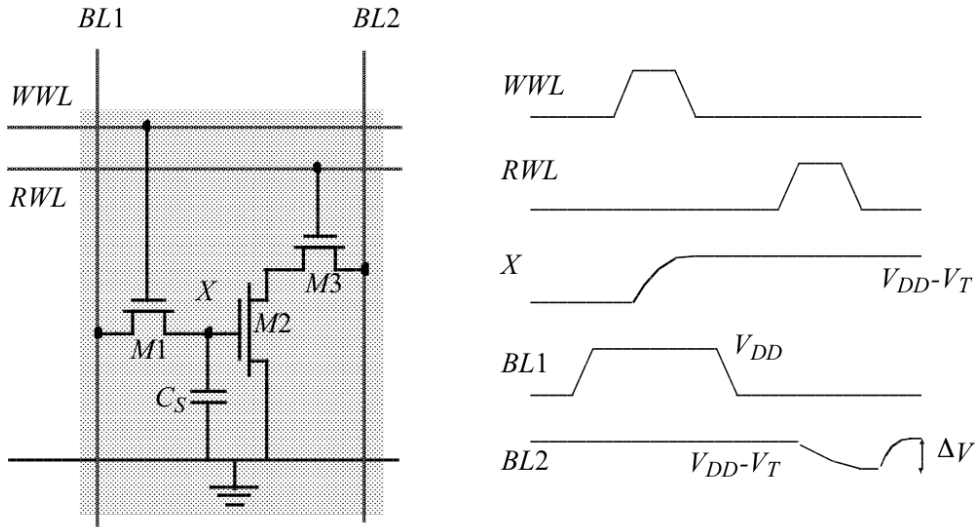


Assume:

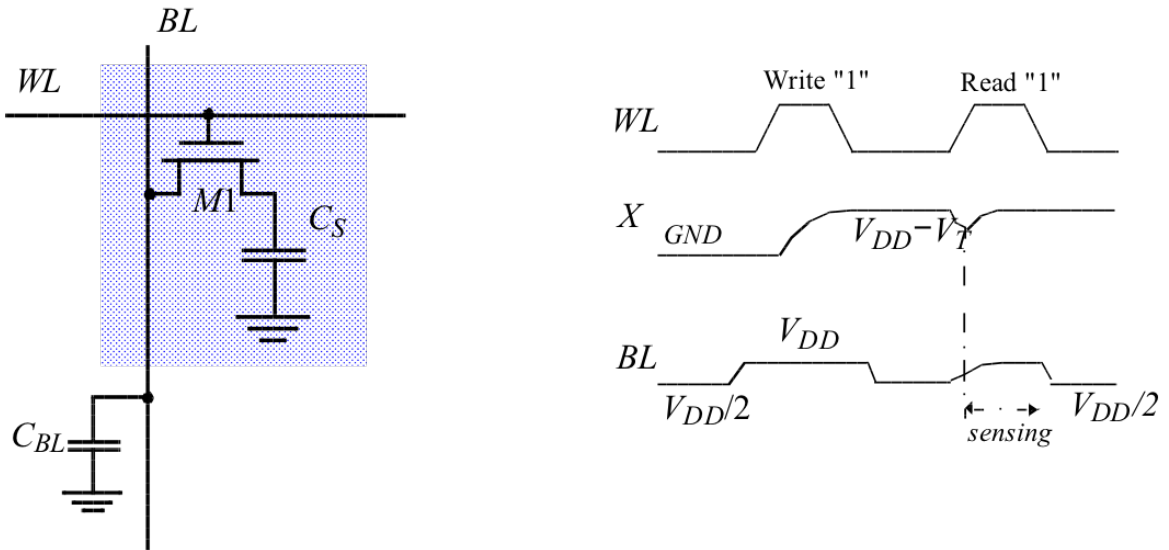
- BL initially at 0
- A initially at 1

How does it depend on  $W_{access}$ ?

4. Below is the 3T DRAM cell with waveform for writing a '1' into the cell and then reading the cell.



5. Below is the 1T DRAM cell with waveform for writing a '1' into the cell and then reading the cell.



6. What are some differences between DRAM and SRAM cells?