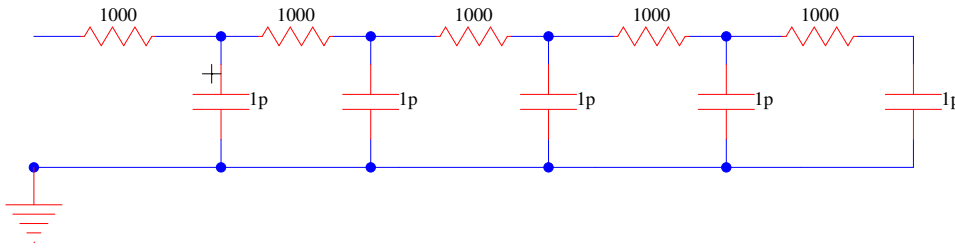
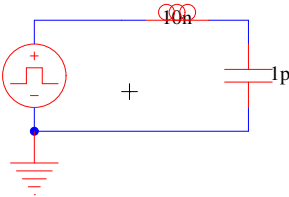


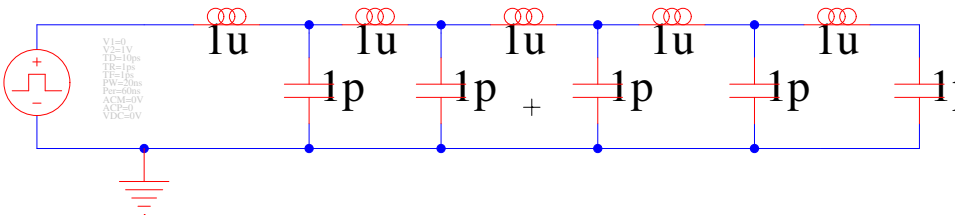
1. What is the step response of an RC ladder chain?



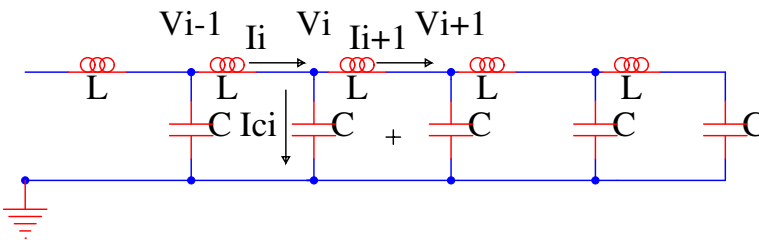
2. What is the response of a 1-stage LC ladder?



3. What is the step response of an LC ladder chain?



4. Considering:



(a) Write KCL at V_i

(b) What is I_{ci} in terms of V_i ?

(c) Combine (a) and (b) and eliminating I_{ci}

(d) What is $V_i - V_{i-1}$ in terms of I_i