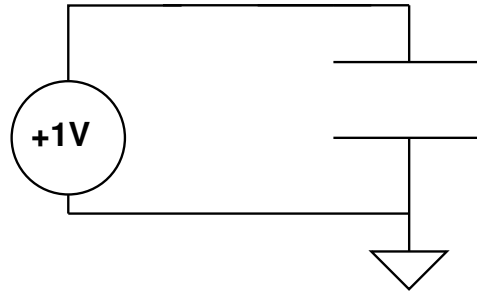


1. Below is a capacitor with a 1V bias voltage across it.

(a) Draw the charge distribution and electric field for this parallel-plate capacitor.



(b) Assume the capacitor has a capacitance of 1F, what is the charge on the top plate? What is the charge on the bottom plate?

2. Why do metals conduct?

3. How many valence electrons does each have?

Silicon	
Boron	
Phosphorous	

