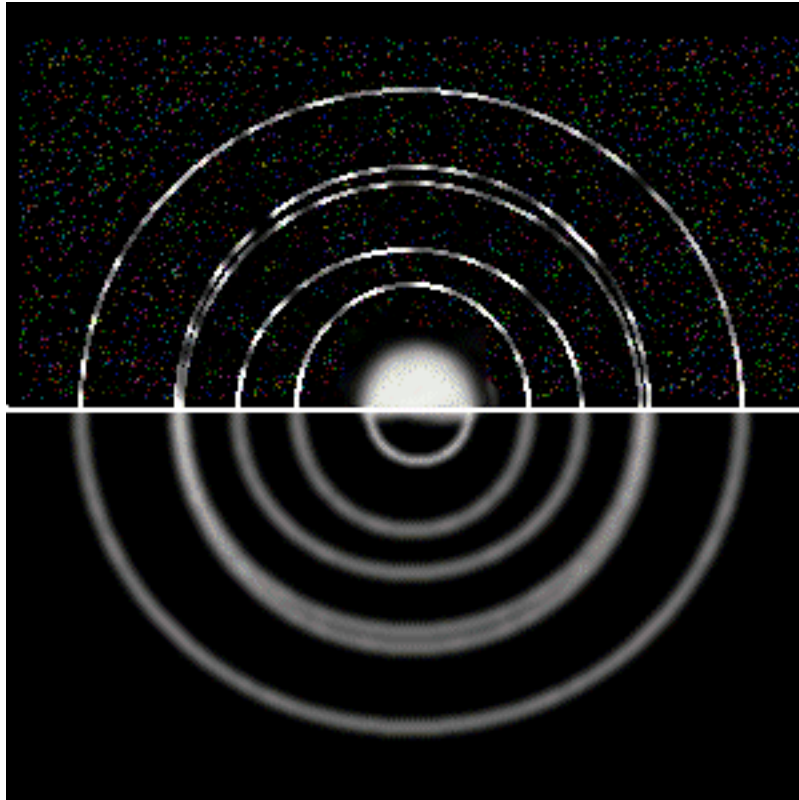
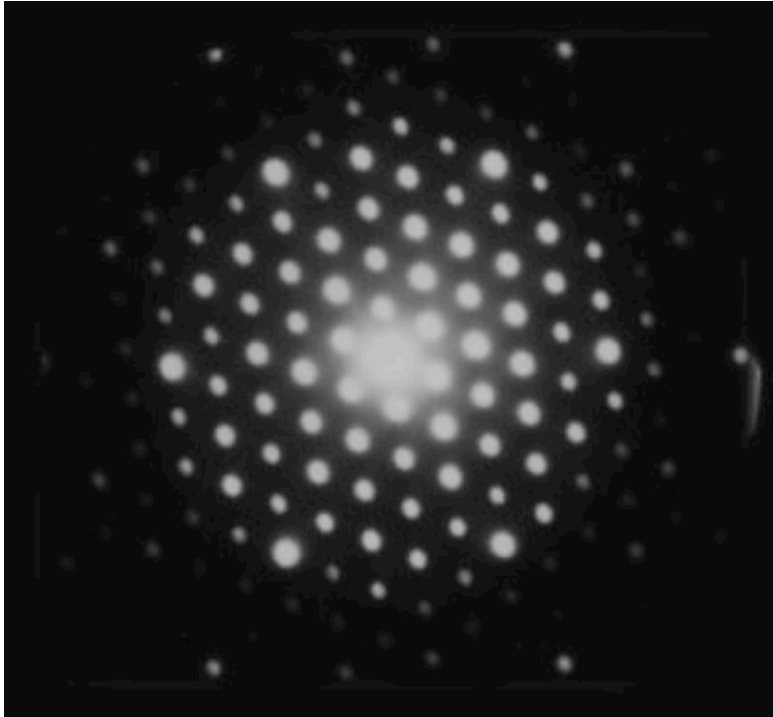


$$\text{DeBroglie Wavelength } (\lambda_{DB}) = \frac{h}{m \cdot v} = \frac{\text{Planck's constant}}{\text{mass} \cdot \text{velocity}}$$

The top half is an example of X-ray diffraction, the bottom of electron diffraction, scales have adjusted for comparison.



**Another Diffraction Pattern:  
Caused by Particles (electrons) or Waves (light)??**



**BETTER QUESTION:**

**How is it behaving? NOT - What is it?**