

Parameter-Invariant Design of Medical Alarms

**James Weimer, Radoslav Ivanov,
Alexander Roederer, Sanjian Chen, and Insup Lee**
University of Pennsylvania

Editor's notes:

Knowing precisely all the parameters of a medical cyberphysical system (CPS) is a challenging task. Parameter-invariant detectors that employ the filtered statistics prove extremely useful for monitoring and enabling the control of structured dynamical processes with unknown parameters. This paper presents a design methodology for medical parameter-invariant monitors and opens new directions into ensuring the robustness of medical CPSs.

—Paul Bogdan, University of Southern California

have different strengths and weaknesses, their performance degrades when information regarding model parameters is scarce. Under this scenario, an alternative approach that performs well is the parameter-invariant detector, which utilizes filtered statistics that are invariant to unknown pa-

■ **THE RECENT EXPLOSION** of low-power low-cost communication, sensing, and actuation technologies has ignited the automation of medical diagnostics and care in the form of medical cyber-physical systems (MCPSs). MCPSs are poised to revolutionize patient care by providing smarter alarm systems, clinical decision support, advanced diagnostics, minimally invasive surgical care, improved patient drug delivery and safety, and performance guarantees. With the MCPS revolution emerges a new era in medical alarm systems, where measurements gathered via multiple devices are fused to provide early detection of critical conditions. The alarms generated by these next-generation monitors can be exploited by MCPSs to further improve performance, reliability, and safety.

Currently, there exist several approaches to designing medical monitors ranging from simple sensor thresholding techniques to more complex data-driven learning approaches. While all the current designs

parameters to achieve a constant false alarm rate across different systems [1]. Parameter-invariant detectors have been successfully applied in other cyber-physical system (CPS) applications with structured dynamics and unknown parameters such as networked systems, smart buildings, and smart grids; most recently, the parameter-invariant approach has been recently extended to medical alarms in the form of a critical shunt detector for infants undergoing a lung lobectomy [2]. The clinical success of this case study application of the parameter-invariant approach has paved the way for a range of other medical monitors.

In this tutorial, we present a design methodology for medical parameter-invariant monitors. We begin by providing a motivational review of currently employed medical alarm techniques, followed by the introduction of the parameter-invariant design approach. Finally, we present a case study example to demonstrate the design of a parameter-invariant alarm for critical shunt detection in infants during surgical procedures.

Common medical alarm designs

Design of medical alarms has its roots in classical fault/anomaly detection and identification (see

Color versions of one or more of the figures in this paper are available online at <http://ieeexplore.ieee.org>.

Digital Object Identifier 10.1109/MDAT.2015.2451083

Date of publication: 30 June 2015; date of current version: 01 September 2015.

[3]–[6] and citations within). While a complete review of the related literature is beyond the scope of this tutorial, this section provides a high-level overview of common medical alarm designs, including sensor thresholding, model-based, data-driven-based, and hybrid approaches, as motivation for the parameter-invariant design.

Sensor threshold alarms

The most common detectors currently in widespread use in hospitals are threshold alarms. Threshold alarms monitor a single physiologic signal as measured by a biosensor [7]. When the value of the signal crosses a predefined fixed threshold, the system produces an alarm that can be observed by a clinician. The goal of a threshold alarm is to alert a clinician whenever the patient transitions from a normal, healthy state to a dangerous, unhealthy state based on the physiologic signal being monitored.

Threshold alarms are popular because they are simple; they are easy to implement, and easy for humans to understand. However, extensive research has shown that single sensor threshold alarms are severely limited. Various studies have documented sensor threshold false alarm rates ranging from 57% to 99% of all alarms, causing alarm fatigue in caregivers [8]. Thus, threshold alarms can ultimately fail to provide clinicians with a reliable understanding of their patients' state.

Model-based alarms

Model-based fault detection is a vast and sophisticated area in control engineering, where varying model fidelities are needed across applications [3]. In medicine, physiological models can be leveraged to provide personalized alarms and treatment advice. Models of the target physiological process can be used to interpret clinical measurements and estimate the patient's state in real time. This information can then be used to generate predictive alarms or advise treatment [9].

Developing a robust model-based alarm system requires a high-fidelity model of the physiological process that is being monitored. To apply the model-based approach to physiological systems in general, the model must be expressive enough to be able to track all relevant states, and at the same time, it must still be identifiable from measurement data so that it is usable in a practical clinical setting. The tradeoff between complexity and usability is one of the

fundamental grand challenges in physiological modeling [10].

Data-driven alarms

The unreliability of underlying physiological processes has led toward the data-driven design of smart alarms. The data-driven approach leverages patient data to learn a model directly and employ the model for clinical detection. Data-driven approaches have been successfully applied in many medical applications and have resulted in better monitoring systems [11].

However, there are often practical challenges to data-driven approaches in the medical domain. Data-driven learning algorithms usually require rich training data with accurate event annotations [6]. In the medical domain, such annotations are often rare or unavailable [8]. Moreover, temporal reasoning over clinical data using data-driven techniques is still an open and vibrant area of research [11], where challenges arise due to the often large number of possible features which must be learned using possibly restrictive data sets.

Hybrid alarms

In an attempt to leverage the strengths of multiple alarm designs, various hybrid approaches to medical monitoring have been proposed (e.g., [12]). In general, these techniques have shown promise by leveraging the strengths of various approaches to overcome their collective shortcomings. However, these hybrid approaches require some combination of accurate models and rich training data [6], [10]. As an alternative to the designs presented in this section, the following section describes the parameter-invariant alarm design approach, which has been shown to perform well in situations where model parameters are unknown and training data is scarce [2].

Parameter-invariant alarm design

In applications where patient or condition variability precludes accurate models and rich training data, the parameter-invariant design provides an alternative approach. A parameter-invariant design represents a guided approach to the removal of unknown or corrupted signals from the measurement. To design a parameter-invariant test, we assume there exists a real-world process \mathcal{P} which can be modeled as $\mathcal{M}_{\mathcal{P}}$ and there exists a test $\mathcal{T}_{\mathcal{H}}$ for the hypothesis (question) \mathcal{H} . In designing a

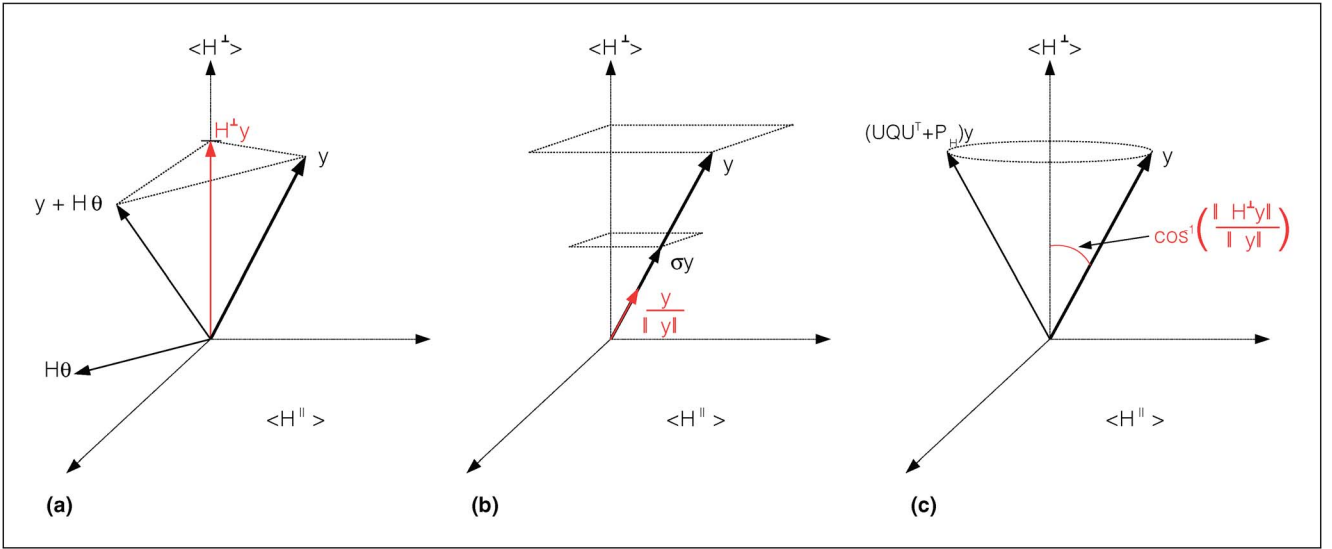


Figure 1. Types of transformations included in the transformation group \mathcal{G} . (a) Subspace bias. (b) Scaling. (c) Rotation.

parameter-invariant alarms, three design requirements must be satisfied:

- $\mathcal{T}_{\mathcal{H}}$ is invariant to $\mathcal{M}_{\mathcal{P}}$;
- $\mathcal{M}_{\mathcal{P}}$ is accurate for \mathcal{P} ;
- $\mathcal{T}_{\mathcal{H}}$ is accurate for \mathcal{H} .

The remainder of this section discusses the above requirements, while the subsequent section provides a step-by-step tutorial example for designing a parameter-invariant alarm.

Foundations of parameter-invariant design

At the core of the parameter-invariant alarm design is the requirement that the test $\mathcal{T}_{\mathcal{H}}$ is invariant to the unknown model parameters $\mathcal{M}_{\mathcal{P}}$. In this section, we first introduce the high-level mathematical foundations for parameter-invariant design, then provide examples of three parameter-induced transformations and their respective invariant tests common in real-world medical monitoring applications namely: bias, scale, and rotation.

To begin, let us assume that the unknown model parameters induce a group of transformations $G_{\mathcal{M}}$ on the measurements \mathbf{y} . A test statistic $t(\mathbf{y})$ is invariant to the group of transformations $G_{\mathcal{M}}$, if and only if

$$\forall g \in G_{\mathcal{M}}, \quad t(\mathbf{y}) = t(g(\mathbf{y}))$$

where, in words, we say the statistic is invariant to the group of transformation if the statistic has the same

value regardless of the unknown parameters. There are many invariant statistics [e.g., $t(\mathbf{y}) = 0$ is trivially invariant to all parameters, but is useless as a test statistic], thus we wish (if possible) to choose an invariant statistic that is maximally invariant, namely the statistic which only removes the effect of the unknown parameters. This concept is captured mathematically by the following implication: for any two measurement vectors \mathbf{y}' and \mathbf{y}''

$$t(\mathbf{y}') = t(\mathbf{y}'') \longrightarrow \exists g \in G_{\mathcal{M}}, \quad \mathbf{y}' = g(\mathbf{y}'').$$

Except in rare cases, a maximally invariant statistic cannot be realized; however, designing the statistic to be near maximally invariant improves the test performance. To present different groups of transformations and their corresponding maximally invariant statistics, the remainder of this section utilizes Figure 1 illustrating transformations induced by bias, scale, and rotation.

Bias occurs when the outputs are (partially) generated through a known process with unknown parameters (e.g., the glucose response of an individual is governed by the individual's insulin sensitivity, which varies across the population). A subspace bias is illustrated in Figure 1a, where outputs \mathbf{y} are summed with a vector $H\theta$ of unknown magnitude and direction (in a known subspace, $\langle H^{\parallel} \rangle$) such that $\mathbf{y} + H\theta$ results. Thus, we say that θ induces a group of transformations $G_{\theta} = \{g \mid g(\mathbf{y}) = \mathbf{y} + H\theta\}$. From the figure, we observe that the vector statistic

$t(\mathbf{y}) = \mathbf{H}^\perp \mathbf{y}$, where \mathbf{H}^\perp denotes the projection onto the null space of \mathbf{H} , is invariant to any bias in the subspace $\langle \mathbf{H}^\parallel \rangle$.¹

Scaling occurs when the outputs are generated by a process which multiplies them by an unknown magnitude. All robust alarms are normalized by the noise variance. In situations where the noise variance is unknown (e.g., the variance of metabolism in a diabetic population), the normalization process induces an unknown scaling of the measurements. The effect of scaling is captured in Figure 1b, where an output \mathbf{y} is scaled according to σ such that $\sigma \mathbf{y}$ results (i.e., $G_\sigma = \{g \mid g(\mathbf{y}) = \sigma \mathbf{y}\}$). From the figure, we observe that the direction of the measurement $t(\mathbf{y}) = \mathbf{y}/\|\mathbf{y}\|$ is maximally invariant to scaling.

A rotation occurs when a translation is performed on a signal in a subspace without affecting the magnitude of the signal. In practical applications, rotations manifest as the eigenvectors of the measurement covariance matrix, in a subspace. The effect of a rotation is illustrated in Figure 1c, where an output \mathbf{y} is rotated in the subspace $\langle \mathbf{H}^\parallel \rangle$ by applying a unitary operation $\mathbf{Q} \in \mathcal{U}^2$ in the subspace of $\langle \mathbf{H}^\parallel \rangle$, denoted as $\mathbf{U}\mathbf{Q}\mathbf{U}^\top$ when $\mathbf{U}\mathbf{U}^\top = \mathbf{H}^\parallel$. The corresponding group of transformations induced by a rotation in \mathbf{H}^\parallel is written as $G_{\mathbf{Q}}(\mathbf{y}) = \{g \mid g(\mathbf{y}) = (\mathbf{H}^\perp + \mathbf{U}\mathbf{Q}\mathbf{U}^\top)\mathbf{y}\}$. From the figure, we observe that the angle between the cone of rotation and the subspace $\langle \mathbf{H}^\perp \rangle$, namely $t(\mathbf{y}) = \cos^{-1}(\|\mathbf{H}^\perp \mathbf{y}\|/\|\mathbf{y}\|)$, is invariant to an arbitrary rotation in $\langle \mathbf{H}^\parallel \rangle$.

While bias, scaling, and rotation represent three types of translations for which individual tests can be designed invariant, combinations of these transformations can also be considered. A detailed description of the compositional translation and the resulting parameter-invariant statistics is provided in [1]. Moreover, the set of transformations presented herein does not represent a complete set of transformations; however, we have found bias, scaling, and rotation sufficient to design powerful detectors in many real-world medical applications.

Physiological process modeling

To develop a model \mathcal{M}_p , which is accurate for a physiological process \mathcal{P} , we consider classical compartment models of physiological phenomena [10]. A compartmental model is (typically) a set of dif-

ferential or difference equations in which the state variables represent the quantities of the target substances within each compartment and the equations represent the interconnections among the compartments. The rates at which the substances enter or leave a compartment can be captured by a set of model parameters. Since most compartmental models are derived from first-principle physics, those parameters usually have physiological meanings: for example, a parameter may represent how fast a chemical diffuses from one body compartment (e.g., an organ or a type of tissue) to another.

In general, compartment models can be designed to arbitrary accuracy through a natural grouping (or ungrouping) of physiological effects. For instance, in the glucose–insulin system, one can model the cumulative effect of carbohydrate ingestion as a single first-order differential equation representing collectively the stomach, intestine, and blood compartments as the glucose system, or one can model each of the three physical compartments individually as interactive systems. When designing a parameter-invariant alarm, the choice in model fidelity affects the performance of the resulting detector. As a rule of thumb, the designer should utilize a model which captures the general trend of the system while simultaneously ensuring that the unknown parameters of the resulting model yield an invariant statistic. This represents a design tradeoff which varies with the monitoring application.

Regardless of the model fidelity, the parameter-invariant design requires two parameterized models: null model (\mathcal{H}_0) and event model (\mathcal{H}_1). The null model describes the normal physiology, while the event model describes the physiology in the presence of the event or condition. After discussing the design of a hypothesis test in the following section, we will demonstrate the modeling approach in a case study example.

Hypothesis testing

Last, we consider that a test $\mathcal{T}_{\mathcal{H}}$ must be accurate for the hypothesis problem \mathcal{H} . While the parameter-invariant approach utilizes two models (null and event), it is unlikely that these two models always accurately explain all possible scenarios. Thus, we utilize two statistics $t_0(\mathbf{y})$ and $t_1(\mathbf{y})$, to test the different hypotheses independently. The first statistic $t_0(\mathbf{y})$ assumes that the null hypothesis \mathcal{H}_0 is true and aims to test the event hypothesis \mathcal{H}_1 . The second statistic

¹See [1] for proofs of invariance and maximality for all transformations considered herein.

² \mathcal{U} denotes the set of unitary matrices.

Table 1 Test decision space for alarm system

	$t_0(\mathbf{y}) \notin \phi_0$	$t_0(\mathbf{y}) \in \phi_0$
$t_1(\mathbf{y}) \notin \phi_1$	Warning (inaccurate model)	No alarm
$t_1(\mathbf{y}) \in \phi_1$	Alarm	Warning (indecision)

$t_1(\mathbf{y})$ assumes that the event hypothesis is true and aims to test the null hypothesis. To ensure a minimum level of performance, the parameter-invariant design bounds the following probabilities:

$$P[t_0(\mathbf{y}) \notin \phi_0] \leq \alpha \quad \text{and} \quad P[t_1(\mathbf{y}) \notin \phi_1] \leq \beta$$

where α and β are the probability of false alarm (type I error) and probability of miss (type II error), respectively, and ϕ_0 and ϕ_1 define when each tests accepts the assumed true hypothesis (event or null). Employing these acceptance regions, the parameter-invariant test decides to sound an alarm based on Table 1.

In Table 1, the parameter invariant test makes a definitive decision (i.e., alarm or no alarm) when both statistic tests agree. When the tests do not agree, the parameter-invariant alarm generates one of two types of warnings. An indecision warning occurs when neither test rejects its assumption, indicating that there is not enough power in the test to disambiguate between the two hypotheses to the level of accuracy specified. A model inaccuracy warning occurs when both tests reject their assumptions, indicating that neither model accurately describes the measurements. The benefit of this two-sided testing approach is that the event (or null) hypothesis will not be accepted/rejected just because there is not enough power or because the models are inaccurate.

Example: Critical shunt alarm

As a tutorial for the parameter-invariant alarm design, this section develops a parameter-invariant alarm to provide early detection of critical-pulmonary shunts in infants during lung lobectomy surgeries, as described in detail in [2].

Hypothesis formulation

In intubated patients, a pulmonary shunt can result in single lung ventilation through the insertion of the endotracheal tube into the main stem bronchus of the healthy lung. A critical shunt occurs when the single lung ventilation is insufficient to

maintain the blood oxygen content. Currently, the level of oxygen in the blood is monitored at the peripheral capillaries (e.g., finger tip) through a pulse oximeter, which does provide an accurate measure of the arterial blood oxygen content, but is time-delayed, and once the measurement decreases the patient is already in a critical state. The aim of this monitor is to use respiratory measurements, sampled at 15-s intervals, corresponding to respiratory rate, end-tidal CO_2 (i.e., amount of CO_2 exhaled), and tidal volume (i.e., inhaled air volume) to provide accurate early detection of the critical pulmonary shunts. Thus, the null hypothesis, in words, is “no shunt has occurred” and the event hypothesis is “a shunt has occurred.”

Physiological model

Recalling that the physiological model must be accurate for the process while simultaneously allowing for a test statistic to be designed invariant to any unknown parameters, we aim to develop a model which captures the general trends in the blood oxygen content under the shunt and no shunt scenarios. The process which relates the hypotheses (i.e., the absence or presence of a shunt) to the respiratory measurements is governed by the circulatory and respiratory dynamics. A simplified schematic model of the gas partial pressures in the circulatory and respiratory systems is illustrated in Figure 2,³ where the compartments of interest are the airways (denoted by $P_e\text{O}_2, P_e\text{CO}_2$ and $P_i\text{O}_2, P_i\text{CO}_2$ for expiration and inspiration, respectively), the alveoli ($P_A\text{O}_2, P_A\text{CO}_2$), arteries ($P_a\text{O}_2, P_a\text{CO}_2$), pulmonary capillaries ($P_p\text{O}_2, P_p\text{CO}_2$), veins ($P_v\text{O}_2, P_v\text{CO}_2$) and pulmonary veins ($P_v^R\text{O}_2, P_v^R\text{CO}_2$ and $P_v^L\text{O}_2, P_v^L\text{CO}_2$ for the right and left side, respectively), also referred to as “lung-specific partial” pressures. For completeness, the end-tidal airway CO_2 partial pressure (i.e., $P_e\text{CO}_2$) is measured via an anesthesia machine along with the tidal volume and respiratory rate.

Despite the complexity of the cardiopulmonary system, we can capture the general physiological trends by utilizing three compartments corresponding to the: 1) cardiovascular system; 2) CO_2 diffusion; and 3) the respiratory system. As shown in Figure 3a, the general trend of the cardiovascular system is that the blood returning to the heart via veins has an oxygen (carbon dioxide) content

³For a complete model explanation, including supporting physiological evidences, see our previous work [2].

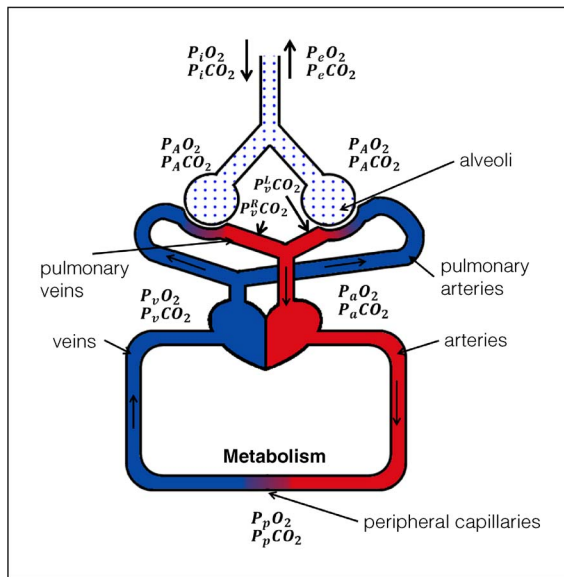


Figure 2. Simplified schematic model of O_2 and CO_2 partial pressures in the respiratory and cardiovascular systems.

approximately equal to a time-delayed measure of the blood leaving the heart via arteries, minus (plus) an unknown constant corresponding to the effects of metabolism. Although this model only captures the expected trend, we include noise with an unknown uncertainty to account for the model inaccuracies.

Under no shunt, alveolar diffusion governs the transfer of gases between the blood and air in the lungs. We recall from [2] that due to the diffusive capacity of CO_2 and O_2 , the change in blood CO_2

content is inversely proportional to the volume of air in the lungs, while the change in blood O_2 content depends not only on the lung volume, but also on unknown parameters representing alveolar wall thickness, lung health, etc. Since the physiological model must be both accurate and allow for an invariant test to be designed (to be discussed), we elect to use CO_2 content as a proxy for O_2 content since, in general, an increase in CO_2 content corresponds to a decrease in O_2 content. Thus, we model the diffusion of CO_2 , as shown in Figure 3a, where $\alpha(t) \approx (\bar{\alpha}/V(t)) + \sigma n(k)$ with $\bar{\alpha}$ denoting an unknown proportionality constant, $V(t)$ is the effective lung air volume (i.e., tidal volume times respiratory rate time sampling rate) and σ denotes the unknown certainty in our model thus far.

In the presence of a shunt, only one lung participates in diffusion as indicated by Figure 3b, which tends to increase CO_2 blood content (and decrease the O_2 blood content). Last, we observe that the alveolar CO_2 partial pressure is approximately equal to the expiratory CO_2 partial pressure such that an increase in expiratory CO_2 indicates an increase blood CO_2 content (corresponding to a decrease in blood O_2 content).

The details of the model developed in this section are provided in [2]. Equally important to the accuracy of the model is the ability to remove the effects of the unknown parameters. Following [2], one may build a state-space model of the system (not shown in this paper due to space constraints),

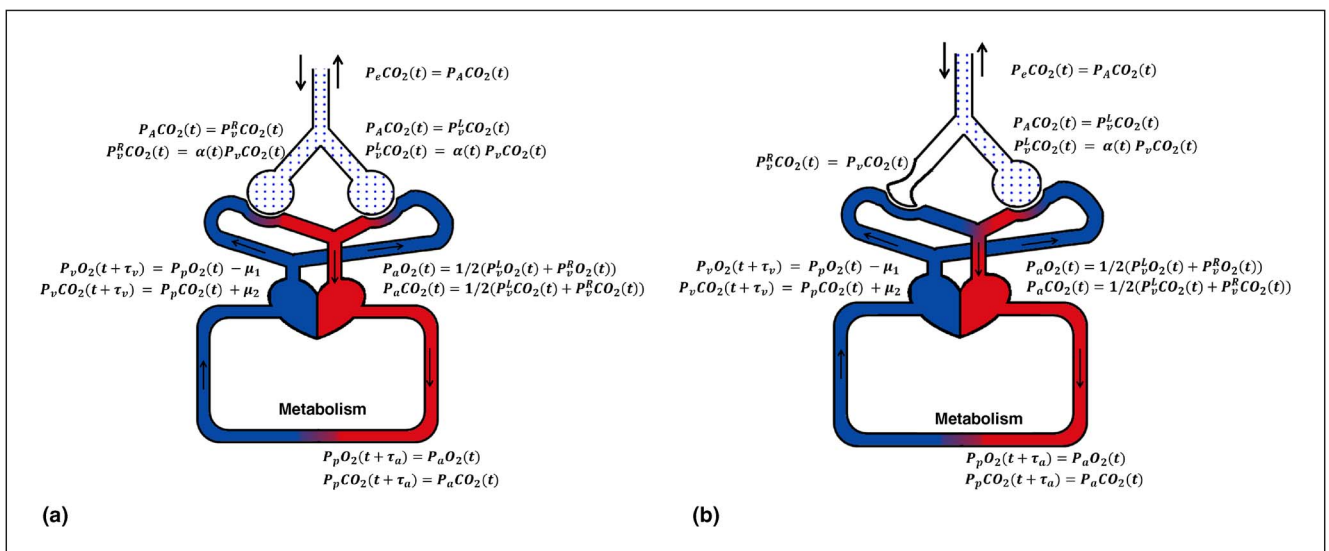


Figure 3. Model of the respiratory and cardiovascular partial pressures (a) without and (b) with a shunt.

and after some algebraic manipulation, the time-series measurement can be modeled as $\mathbf{y} = \mathbf{F}_i \boldsymbol{\theta} + \sigma \mathbf{n}$ under each hypothesis with lumped parameters $\boldsymbol{\theta} = [\bar{\alpha}, \mu_i \bar{\alpha}]^\top$, and \mathbf{n} denoting noise.

Parameter-invariant test

We observe that the unknown parameters $\boldsymbol{\theta}$ and σ induce measurement transformations corresponding to bias and scaling in the measurements (i.e., $G_i = \{g|g(\mathbf{y}) = \sigma \mathbf{y} + \mathbf{F}_i \boldsymbol{\theta} \text{ for } i \in \{0, 1\}\}$). The invariant statistics to the groups of transformations G_0 and G_1 , respectively, are

$$t_0(\mathbf{y}) = \frac{\mathbf{y}^\top \mathbf{P}_{01} \mathbf{y}}{\mathbf{y}^\top (\mathbf{P}_0 - \mathbf{P}_{01}) \mathbf{y}} \quad (1)$$

and

$$t_1(\mathbf{y}) = \frac{\mathbf{y}^\top \mathbf{P}_{10} \mathbf{y}}{\mathbf{y}^\top (\mathbf{P}_1 - \mathbf{P}_{10}) \mathbf{y}} \quad (2)$$

where

$$\begin{aligned} \mathbf{P}_i &= \mathbf{I} - \mathbf{F}_i (\mathbf{F}_i^\top \mathbf{F}_i)^{-1} \mathbf{F}_i^\top \\ \mathbf{P}_{ij} &= \mathbf{P}_i \mathbf{F}_j (\mathbf{F}_j^\top \mathbf{P}_i \mathbf{F}_j)^{-1} \mathbf{F}_j^\top \mathbf{P}_i. \end{aligned}$$

For $t_0(\mathbf{y})$, invariance is established with respect to G_0 by first projecting the measurements onto the null space of \mathbf{F}_0 (eliminating the bias induced by $\boldsymbol{\theta}$) using \mathbf{P}_0 . Then, a ratio is constructed where the numerator is the energy of the remaining measurements explained by signal under the event hypothesis $\mathbf{P}_0 \mathbf{F}_1$, and the denominator is the energy not explained by the signal, thus eliminating the scaling induced by σ .

Discussion and ongoing work

THE PARAMETER-INVARIANT design approach overview in this paper addresses a design problem commonly encountered in medical applications. Based on an evaluation (detailed in [2]), the critical shunt alarm evaluated on real-patient data available from the Children's Hospital of Philadelphia (CHOP) from lobectomy surgeries over the last decade, for 26 patients with shunt-induced hypoxia, the detector gave early predictions for about 80% of the cases while maintaining a false alarm rate of about two false alarms per hour as tested on 172 open surgeries that were known to not have a shunt. Ongoing work in designing parameter-invariant medical alarms includes the developing alarms for hypovolemia and

hypoglycemia conditions. The design of detectors for these conditions will give insight into the robustness of the parameter-invariant design. ■

Acknowledgment

This work was supported in part by the National Science Foundation (NSF) under Grant CNS-1035715.

References

- [1] L. L. Scharf, *Statistical Signal Processing*. Reading, MA, USA: Addison-Wesley, 1991, vol. 98.
- [2] R. Ivanov, J. Weimer, A. Simpaio, M. Rehman, and I. Lee, "Early detection of critical pulmonary shunts in infants," in *Proc. 6th Int. Conf. Cyber-Physical Syst.*, 2015, pp. 110–119.
- [3] A. S. Willsky, "A survey of design methods for failure detection in dynamic systems," *Automatica*, vol. 12, no. 6, pp. 601–611, 1976.
- [4] V. Chandola, A. Banerjee, and V. Kumar, "Anomaly detection: A survey," *ACM Comput. Surv.*, vol. 41, no. 3, pp. 15, 2009.
- [5] H. L. Van Trees, *Detection, Estimation, and Modulation Theory*. New York, NY, USA: Wiley, 2004.
- [6] C. M. Bishop et. al, *Pattern Recognition and Machine Learning*. New York, NY, USA: Springer-Verlag, 2006, vol. 1.
- [7] B. R. Eggins, *Biosensors: An Introduction*. Chichester, U.K.: Wiley, 1996.
- [8] J. Edworthy and E. Hellier, "Fewer but better auditory alarms will improve patient safety," *Quality Safety Health Care*, vol. 14, no. 3, pp. 212–215, 2005.
- [9] Z. Jiang, M. Pajic, and R. Mangharam, "Cyber-physical modeling of implantable cardiac medical devices," *Proc. IEEE*, vol. 100, no. 1, pp. 122–137, Jan. 2012.
- [10] C. Cobelli and E. Carson, *Introduction to Modeling in Physiology and Medicine*. New York, NY, USA: Academic, 2008.
- [11] M. Stacey and C. McGregor, "Temporal abstraction in intelligent clinical data analysis: A survey," *Artif. Intell. Med.*, vol. 39, no. 1, pp. 1–24, 2007.
- [12] M. Ghorbani and P. Bogdan, "A cyber-physical system approach to artificial pancreas design," in *Proc. 9th IEEE/ACM/IFIP Int. Conf. Hardware/Softw. Codesign Syst. Synthesis*, 2013, DOI: 10.1109/CODES-ISS.2013.6659004.

James Weimer is currently a Postdoctoral Researcher in the Department of Information and Computer Science, University of Pennsylvania,

Philadelphia, PA, USA. He was previously a Post-doctoral Researcher in the Department of Automatic Control, Royal Institute of Technology KTH, Stockholm, Sweden. His research interests focus on the design and analysis of cyber-physical systems with application to medical devices/monitors, networked systems, building energy management, and smart grids. Weimer has a BS in electrical engineering from Purdue University, West Lafayette, IN, USA (2005) and an MS and a PhD in electrical and computer engineering from Carnegie Mellon University, Pittsburgh, PA, USA (2007 and 2010, respectively).

Radoslav Ivanov is currently working toward a PhD degree in the Computer and Information Science Department, University of Pennsylvania, Philadelphia, PA, USA. His main research focus is on the security and control of cyber-physical systems (CPS), in particular automotive and medical CPS. He is also interested in predictive and retrospective analysis of medical patient data. Ivanov has a BA in computer science and economics from Colgate University, Hamilton, NY, USA.

Alexander Roederer is currently working toward a PhD in the Department of Computer and Information Science, University of Pennsylvania, Philadelphia, PA, USA. His research interests include the application of machine learning to high-frequency, multisource physiologic data to develop clinical decision support systems. Roederer has a BS in computer science and mathematics from the University of Miami, Miami, FL, USA and an MSE in computer and information science from the University of Pennsylvania.

Sanjian Chen is currently working toward a PhD in the Department of Computer and Information Science, University of Pennsylvania, Philadelphia, PA, USA. His research interests include model-based analysis of cyber-physical systems with application to medical and automotive systems. Chen has a BE from Tsinghua University, Beijing, China and an MSE in computer and information science from the University of Pennsylvania. He received the 2012 IEEE Real-Time Systems Symposium (RTSS) Best Paper Award.

Insup Lee is Cecilia Fidler Moore Professor of Computer and Information Science and Director of the PRECISE Center at the University of Pennsylvania, Philadelphia, PA, USA. He holds a secondary appointment in the Department of Electrical and Systems Engineering. His research interests include cyber-physical systems (CPSs), real-time systems, embedded systems, runtime verification, assurance cases, and high-confidence medical systems. The theme of his research activities has been to assure and improve the safety, security, and timeliness of life-critical CPS. Lee has a PhD in computer science from the University of Wisconsin, Madison, WI, USA. He is the Fellow of the IEEE. He received the 2008 IEEE Technical Committee on Real-Time Systems (TC-RTS) Outstanding Technical Achievement and Leadership Award.

■ Direct questions and comments about this article to James Weimer, PRECISE Center, School of Engineering and Applied Sciences, University of Pennsylvania, Philadelphia, PA 19104 USA; fweimerj@seas.upenn.edu.